

Getting Started with Cycle Trends Plus for MetaStock 11

Cycle Trends Plus is an add-on for the **MetaStock** charting software, so requires that MetaStock version 11 or later (Standard or Professional) must already be installed on the same computer **before** installing the add-on.

If MetaStock is installed and operating properly, you can proceed to installing the Cycle Trends Plus add-on by following the instructions in the e-mail you would have received from Cycle Trends with ***your license and installation info.***

This e-mail will provide you with a link to download and install the **Cycle Trends Manager**, together with your **Cycle Trends username and password** for signing into your account. The Cycle Trends Manager is a tool to assist you with managing your Cycle Trends licenses and installations and will allow you to quickly and easily validate your Cycle Trends Plus license and to install the add-on.



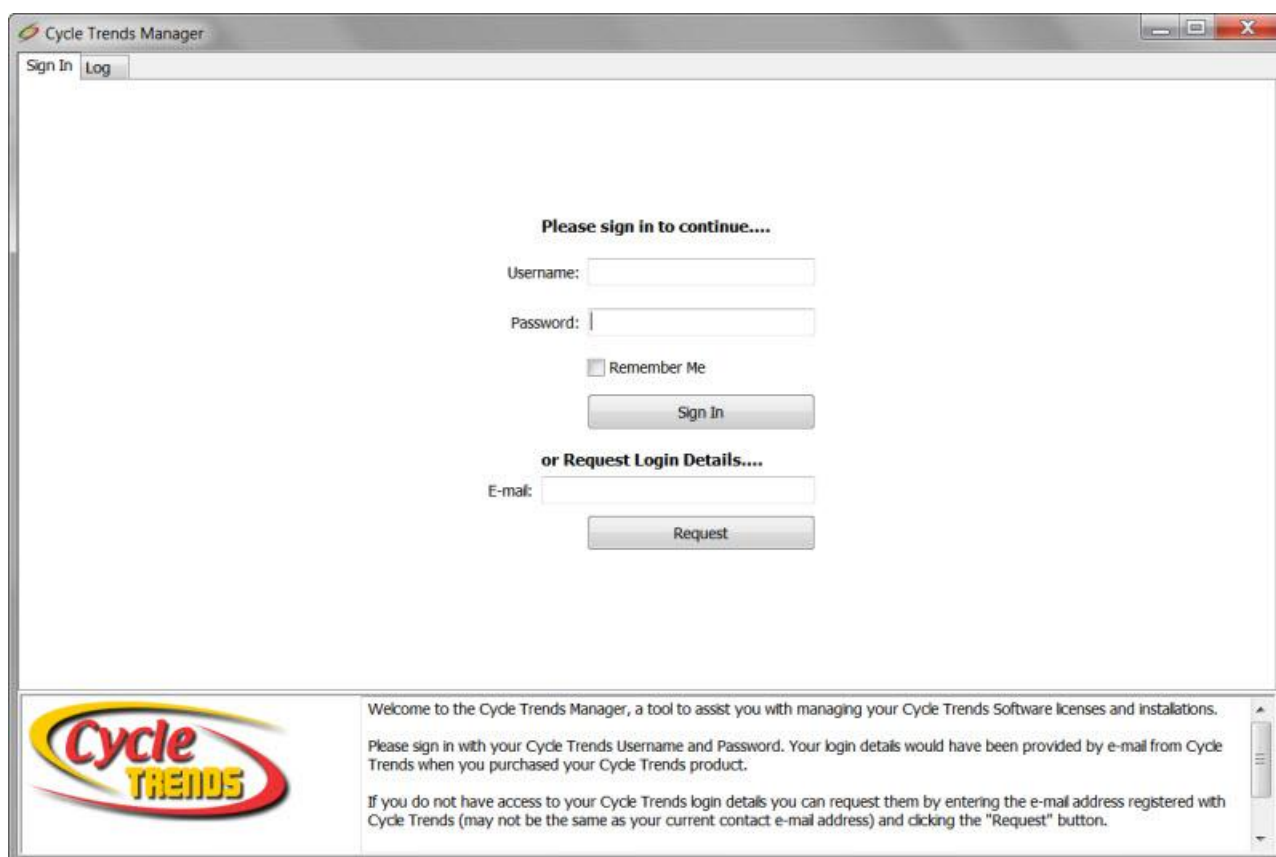
You can click on the link provided in the e-mail to [download and install the Cycle Trends Manager application](http://www.cycletrends.net/ctdr/ctmgrs.exe), or you can enter (or copy and paste) the following into the address bar of your web browser:

<http://www.cycletrends.net/ctdr/ctmgrs.exe>

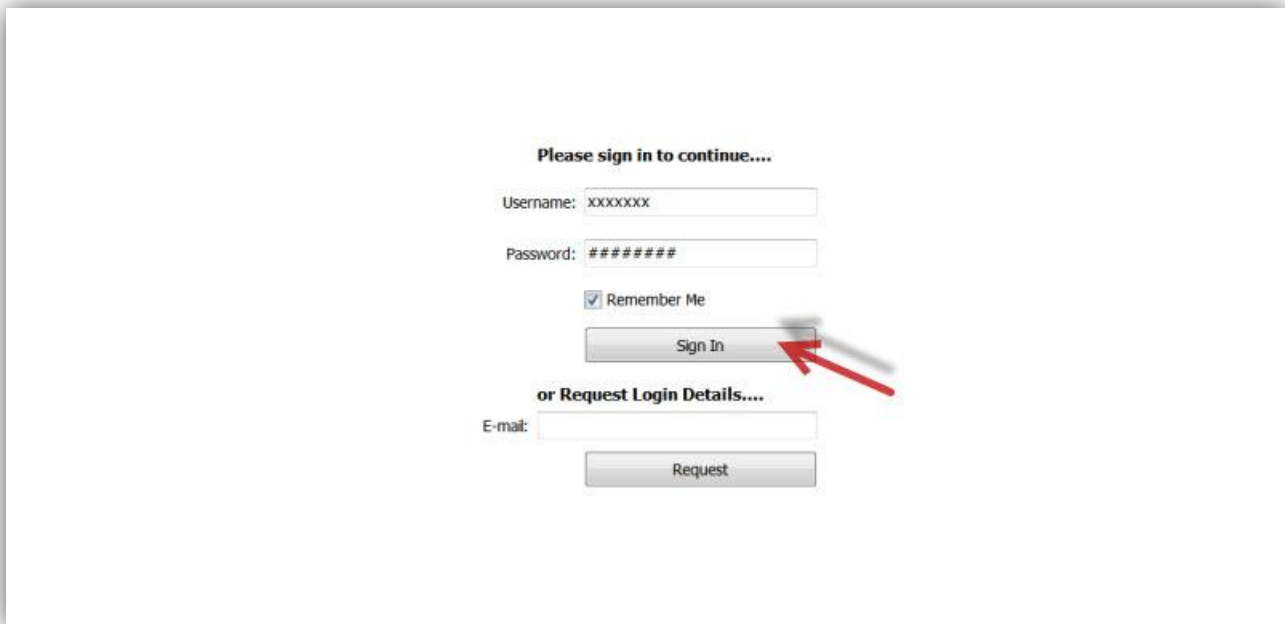
If asked to "run" or "save" the download please select "run" and if you receive any security alerts it is fine to continue as you can trust our software. You may need to select "OK", "Yes" or "Run" to continue with the installation.

The application setup wizard will then start. Simply click the "Next" button to install and run the Cycle Trends Manager.

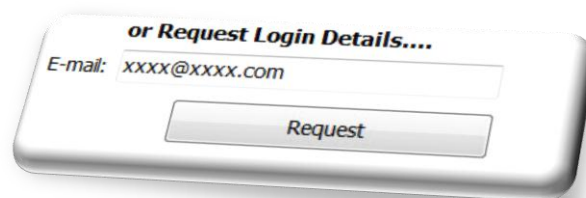
You will then need to enter your Cycle Trends username and password to sign into your Cycle Trends account, or you can enter your "registered" e-mail address to request your login details if you have lost or misplaced them.



Once you have entered your Cycle Trends username and password, please click the **Sign In** button to sign into your account and retrieve your Cycle Trends license. You can also check the “Remember Me” checkbox if you would like the Manager to remember your username and password for future use.

A screenshot of a web login form. At the top, it says "Please sign in to continue....". Below this are two input fields: "Username: xxxxxxxx" and "Password: #####". There is a checkbox labeled "Remember Me" which is checked. Below the checkbox is a "Sign In" button. A red arrow points to the "Sign In" button. Below the "Sign In" button, it says "or Request Login Details....". There is an "E-mail:" label followed by an input field containing "xxxx@xxxx.com". Below the input field is a "Request" button.

If you do not have the required username and password for some reason, you can request to have these details e-mailed to you by entering your **registered** e-mail address and clicking the **Request** button. Please remember that you need to enter the e-mail address provided to Cycle Trends when you purchased your product, which may not be the same as your current contact e-mail address. Your details will then be mailed to your registered e-mail and to any other contact e-mail address on file.

A 3D rendering of a button with a white face and a grey border. The text on the button reads "or Request Login Details...." in bold. Below this is an "E-mail:" label followed by the text "xxxx@xxxx.com". At the bottom of the button is a "Request" button.

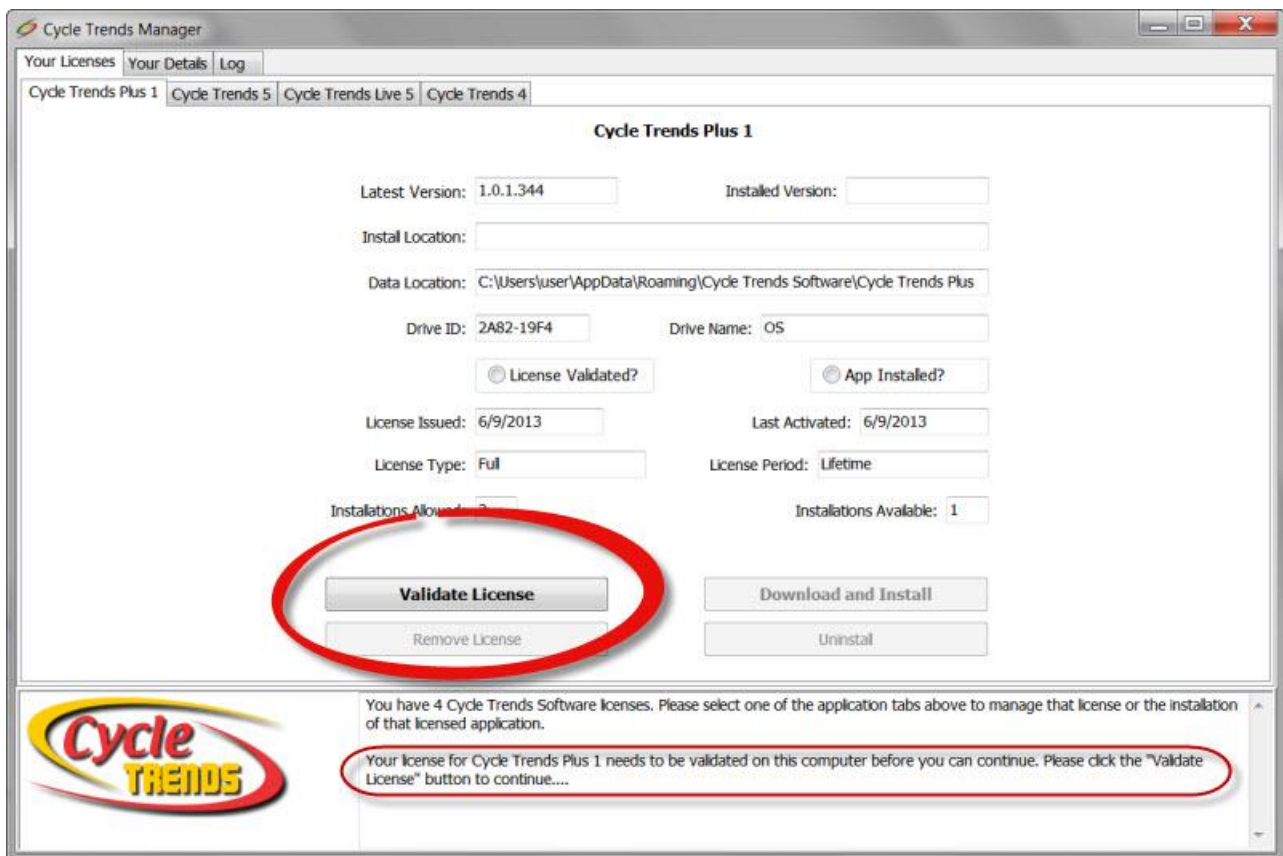
Depending on your internet connection, it may take about a minute to sign in and retrieve your software license details. Once these details have been retrieved, you will be presented with one or more tabs under the main “Your Licenses” tab. The **Cycle Trends Plus** tab will display the latest release version of the add-on and indicate the status of your software license and installation on this computer.

The message box at the bottom of the Manager window will provide you with further information. If you have not yet validated your license or installed the add-on, you will be instructed on the next step to take.

If you still need to validate our license on this computer, the message will state that ‘Your license for Cycle Trends Plus needs to be validated on this computer before you can continue. Please click the “Validate License” button to continue....’

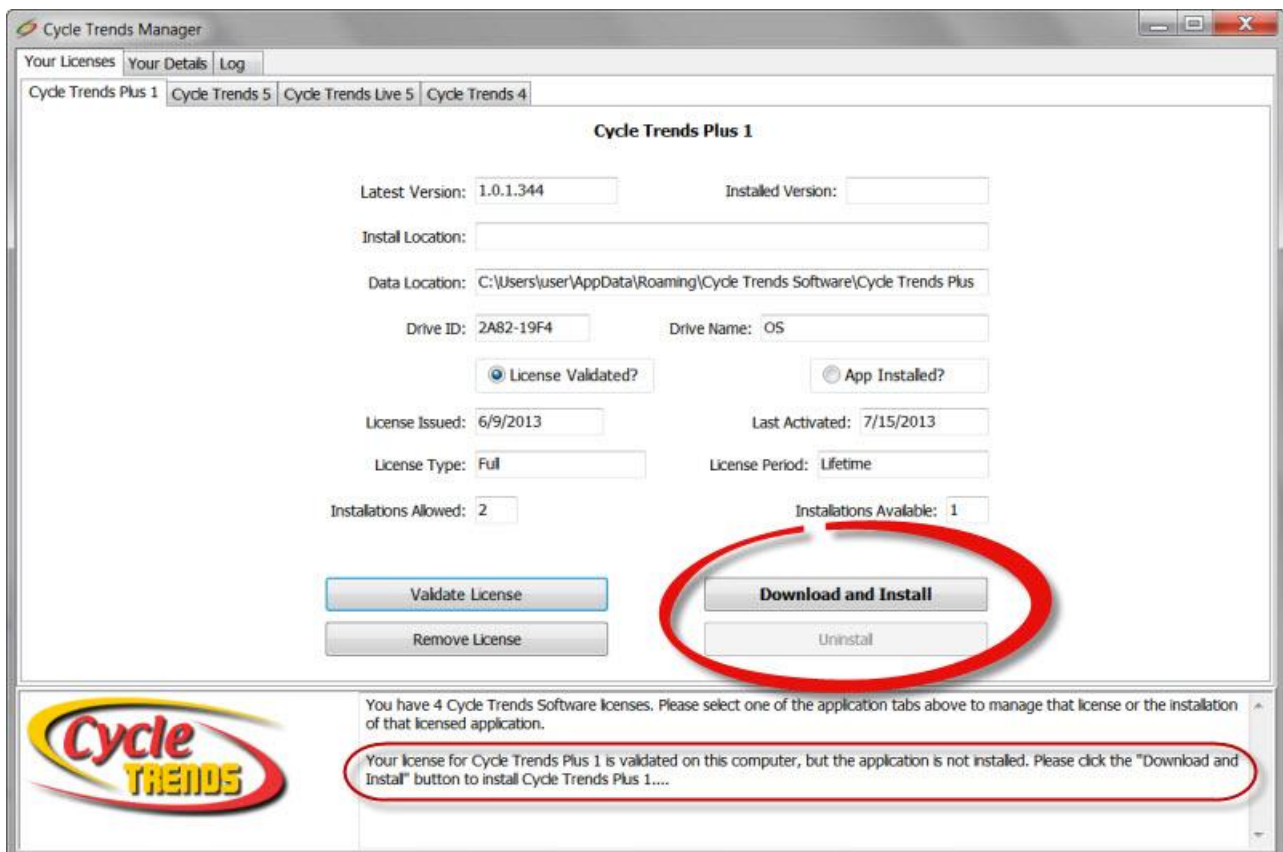
Your license should be successfully validated within a few seconds of clicking the button. If there is any problem with the validation (such as all allowed installations used etc.), you can check the **Log** tab at the top for further details or to e-mail the log to **Cycle Trends Support** for further assistance.

Once your license has been validated, you can proceed to downloading and installing the latest release of the Cycle Trends Plus add-on.



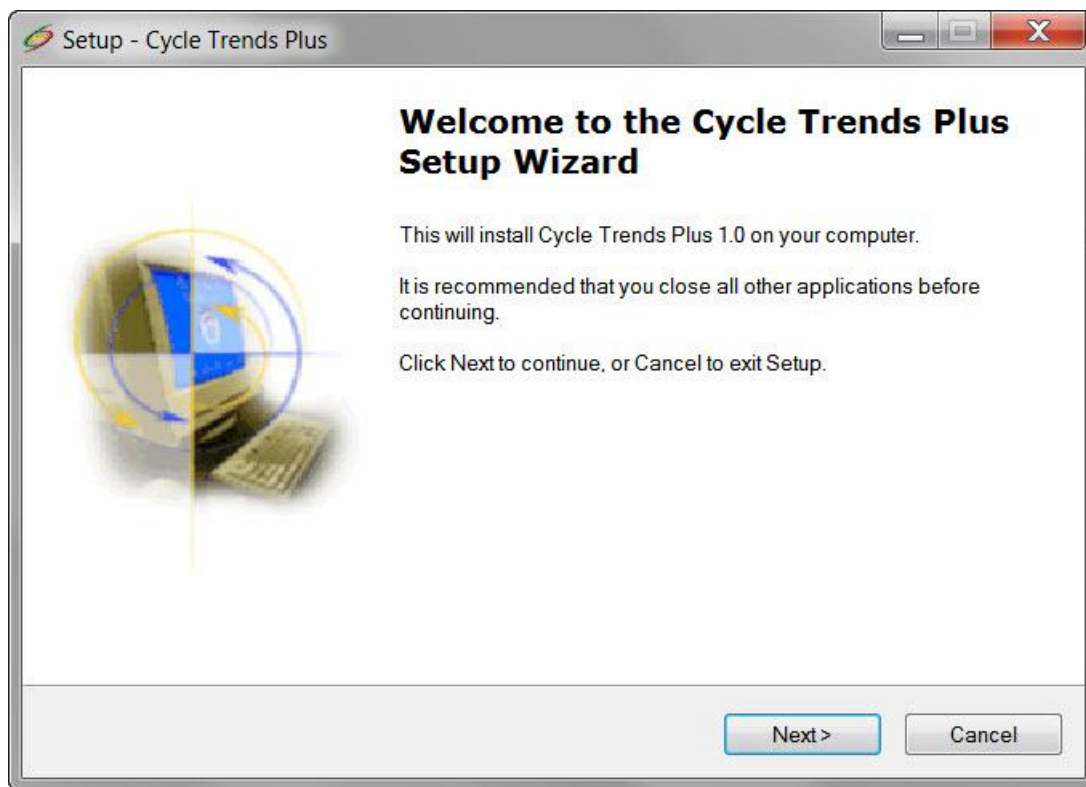
The Manager will indicate if your add-on license is successfully validated on this computer, and allow you to remove your license from this computer if necessary (e.g. to install the add-on on a different computer).

If you still need to install the add-on on this computer, the message at the bottom will state that 'Your license for Cycle Trends Plus is validated on this computer, but the application is not installed. Please click the "Download and Install" button to install Cycle Trends Plus....'



Clicking the **Download and Install** button will download the application setup file to your computer. A progress bar will indicate the progress of the download, and once the download is complete the application setup wizard will automatically start.

If there is any problem with the download you can check the **Log** tab at the top for further details or to e-mail the log to **Cycle Trends Support** for further assistance.



Click the **Next** button in the Setup Wizard to complete the installation of Cycle Trends Plus. Part of the installation process will be handled by MetaStock which may ask for permission to overwrite files etc.

Once your Cycle Trends Plus license has been successfully validated and the add-on successfully installed, you will be ready to start using the add-on within MetaStock.

The **Cycle Trends Plus** add-on provides 5 ready-made systems and 5 chart templates for use within MetaStock. All 5 systems can be used with the MetaStock PowerTools - the **Expert Advisor**, the **Explorer**, and the **System Tester**.

These systems are:

- **CTP Classic** — the classic Cycle Trends system using three Cycle Indicators to analyse the performance of an instrument, namely the Cycle-Trig indicator, the TrueOBOS indicator, and a Trendic indicator with a period or "speed" of 36. All these indicators need to confirm each other to get a positive ("buy") or negative ("sell") signal
- **CTP CycleOBOS** - a system using two Cycle Indicators to analyse the performance of an instrument, namely the Cycle-Trig indicator and the TrueOBOS indicator. Both indicators need to confirm each other to get a positive ("buy") or negative ("sell") signal
- **CTP CycleTrendic** — a system using two Cycle Indicators to analyse the performance of an instrument, namely the Cycle-Trig indicator and the Trendic indicator with two different periods or "speeds" of 55 and 36. All these indicators need to confirm each other to get a positive ("buy") or negative ("sell") signal
- **CTP Trendics** — a system using the Trendic indicator with three different periods or "speeds" of 55, 36, and 21 to analyse the performance of an instrument. All three "speeds" need to confirm each other to get a positive ("buy") or negative ("sell") signal
- **CTP Maximus** — a system using three Cycle Indicators to analyse the performance of an instrument, namely the Cycle-Trig indicator, the TrueOBOS indicator, and the Trendic indicator with three different periods or "speeds" of 36, 55 and 21. All these indicators need to confirm each other to get a positive ("buy") or negative ("sell") signal

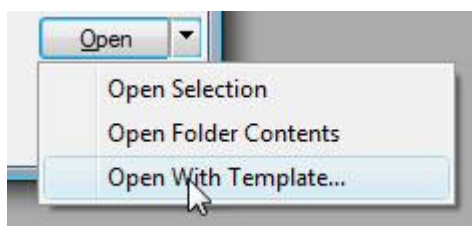
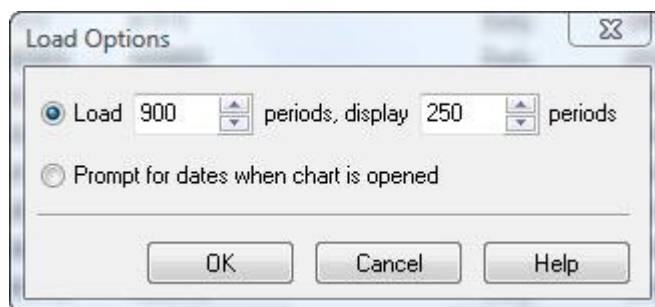
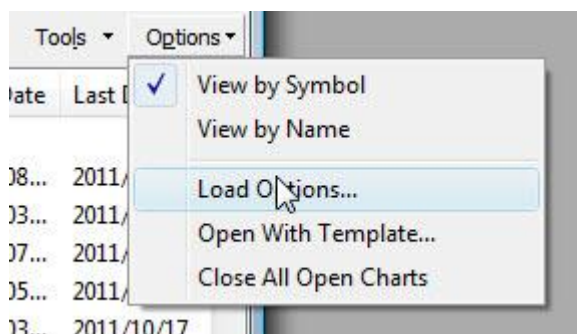
The MetaStock PowerTools can be used to help you determine how instruments (shares, stocks, futures, options, currency pairs, etc.) are performing based on these Cycle Trends systems or to test the historical profitability of using these Cycle Trends systems.



The tutorials in the MetaStock Help will show you how to use the Expert Advisor, the Explorer, and the System Tester.

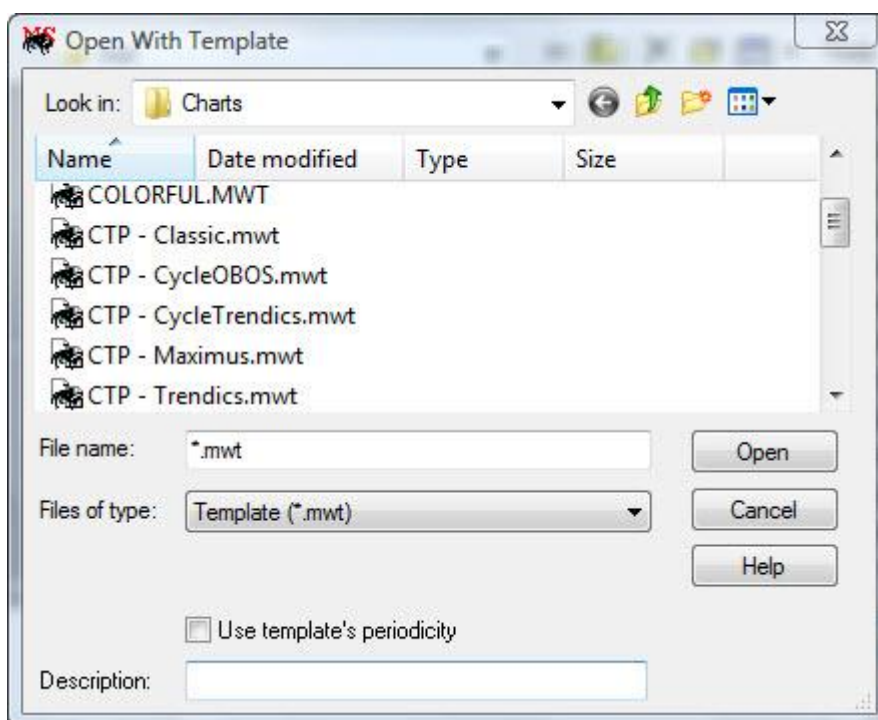
Cycle-based indicators give better results with more historical data so we recommend that you load **900 or more** data points (periods or records) into charts whenever you intend to use any of our indicators, chart templates, etc.

You can change the amount of historical data loaded when opening new charts by selecting **Load Options** on the **Options** menu on the top-right of the window displayed when opening new charts.

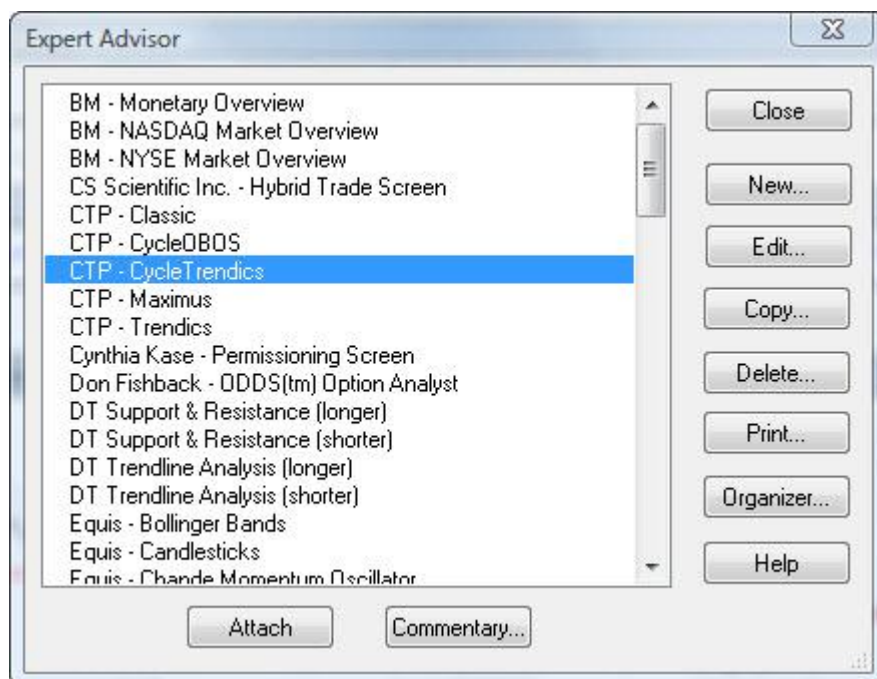


You can open a chart with a pre-defined template by selecting **Open With Template** on the menu displayed when clicking the down arrow on the **Open** button.

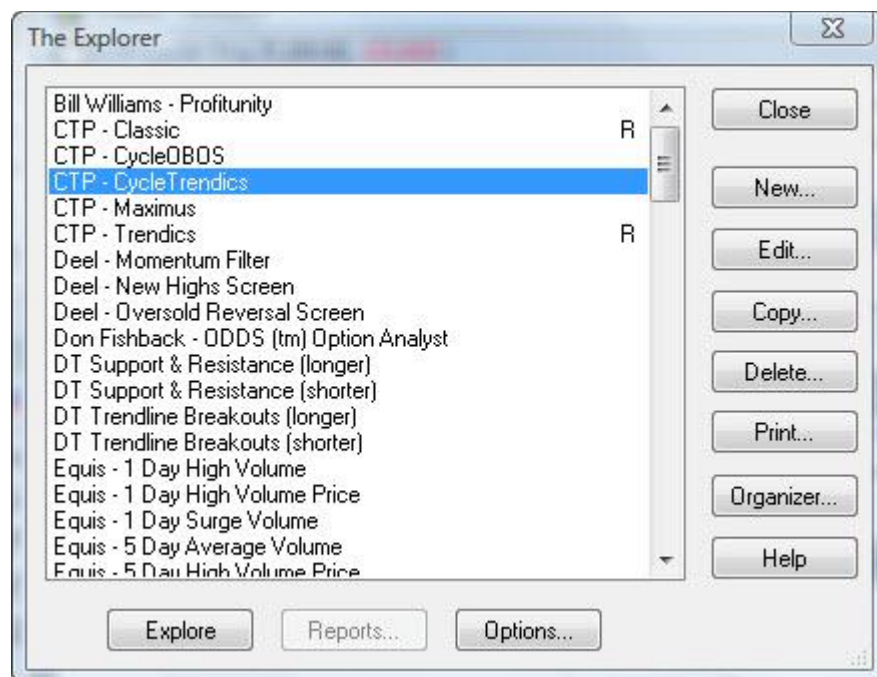
When opening a chart with a template, you will see 5 Cycle Trends Plus templates in the list of available templates.



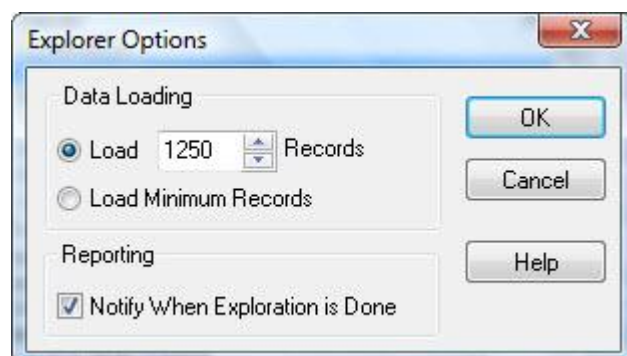
You can also attach one of the 5 corresponding Cycle Trends Expert Advisors to charts. The **Commentary** button will display an Expert Commentary explaining any signals being generated. The tutorials in the MetaStock Help provide more information on using the Expert Advisor.



You can use the 5 corresponding Cycle Trends Explorations in the Explorer to perform in-depth explorations or scans on multiple instruments. The tutorials in the MetaStock Help provide more information on using the Explorer.



Historical cycles are better defined with more historical data to work with, so use at least 900 or more data points in explorations, and load the same number of data points in charts to get the same corresponding results. For example, if you use 1250 data points in a Cycle Trends exploration, you should load 1250 data points into a chart to get the same results displayed in any cycle-based indicators on the chart.



You can also use the 5 corresponding Cycle Trends systems in the System Tester to test the historical profitability of the supplied systems. The tutorials in the MetaStock Help provide more information on using the System Tester.

